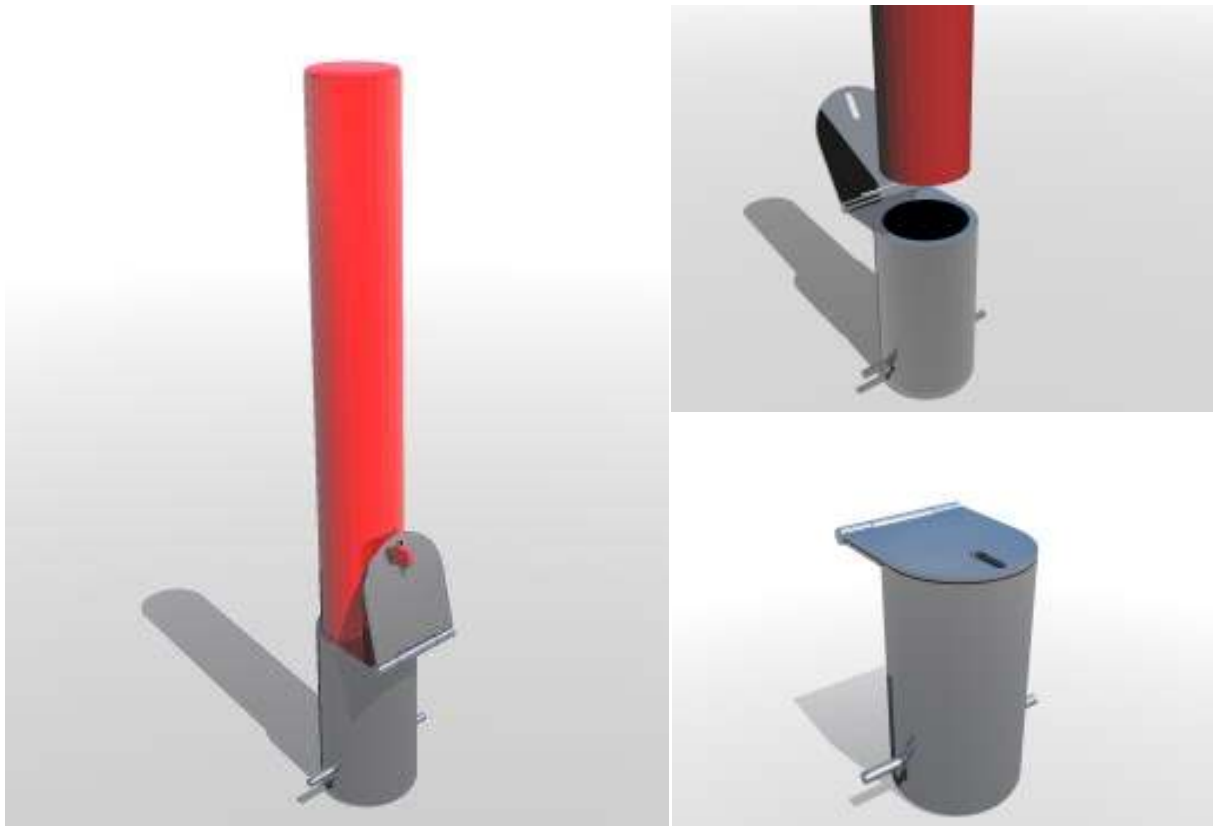


Removable



The Removable range can be derived from any standard bollard top.
Only available in 114mm or 139mm diameter.
Stainless Steel option (Bollard only)

Mild Steel to BS 1449. Available in various diameters from 114mm to 193mm.
Hot dipped galvanised to BSEN ISO 1461 (1999)
Polyester Powder Coated 40-60 micron.

